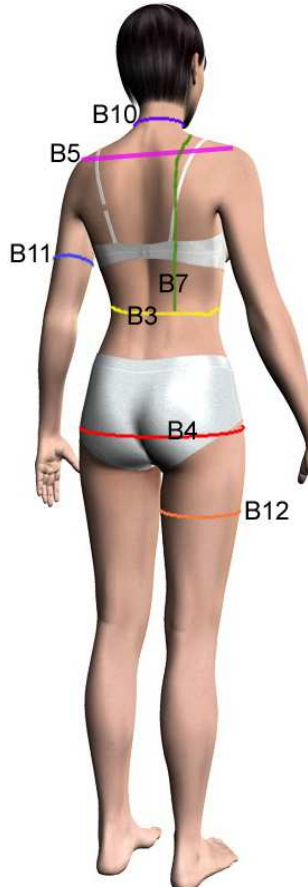
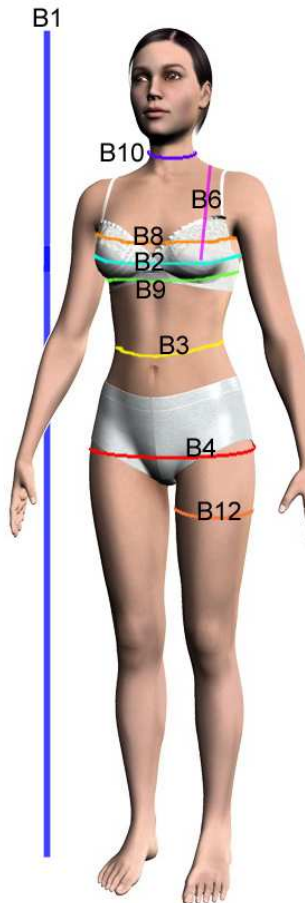


## DressTailor.net - Measurement Guide (1/2)



BODY MEASUREMENTS		Inches / cm
<b>B1</b>	<b>Height</b> Your body height, with no shoes.	
<b>B2</b>	<b>Bust</b> Circumference around the fullest part of your bust.	
<b>B3</b>	<b>Waist</b> Circumference around the natural waist line, usually the thinnest part of your waist.	
<b>B4</b>	<b>Hip</b> Circumference around the fullest part of your hip.	
<b>B5</b>	<b>Shoulder Width</b> Measure at back. (shoulder seams distance of your blouse).	
<b>B6</b>	<b>Shoulder to Bust</b> Measure from top of shoulder at neckline to bust point.	
<b>B7</b>	<b>Shoulder to Waist</b> Measure at the back, from top of shoulder at neckline to your natural waist line (B3).	
<b>B8</b>	<b>Upper Bust</b> Circumference above the fullest part of your bust, useful for strapless top or dress.	
<b>B9</b>	<b>Lower Bust</b> Circumference below the fullest part of your bust, useful for strapless top or dress.	
<b>B10</b>	<b>Neck</b> Circumference around the neck.	
<b>B11</b>	<b>Biceps</b> Circumference around the fullest part of upper arm.	
<b>B12</b>	<b>Thigh</b> Circumference around the fullest part of thigh.	
<b>Weight</b>	<b>Your Weight ( lbs / kg )</b> A useful reference for the tailors.	

## DressTailor.net - Measurement Guide (2/2)



<b>GARMENT MEASUREMENTS</b> (You can control exactly how you garment will be made by providing the garment measurements you like. Measuring one of your favorable garment can be very helpful.)		Inches / cm
<b>G1</b>	<b>Length</b> Desired length of your garment. You may measure you best fit garment.	
<b>G2</b>	<b>Sleeve</b> From shoulder seam to length desired.	
<b>G3</b>	<b>Sleeve Cuff</b> Desired cuff circumference.	
<b>G4</b>	<b>Garment Waist (Skirt or Pants)</b> Desired waist circumference of your skirt or pants, if differ from natural waist (B3).	
<b>G5</b>	<b>Outer Length (Pants)</b> Desired outer length of your pants.	
<b>G6</b>	<b>Inner Length (Pants)</b> Desired inner length of your pants.	
<b>G7</b>	<b>Cuff (Pants)</b> Desired cuff circumference.	
<b>G8</b>	<b>Slit Length</b> Desired length of the slit(s), if any (common on Chinese dresses).	

### Notes:

It is important that you WEAR UNDERGARMENTS when taking measurement, and DON'T ADD ANY ROOM (allowance) to your body measurements. Lay the measuring tape flat on your skin.

~ Measurements in **red** are essential;

~ Measurements in **blue** are useful, with them our tailors can make your garment more accurately;

~ Measurements in **black** are auxiliary. Leave them blank if not sure.

<http://DressTailor.com>  
<http://ChineseTailor.com>

<http://BridalTailor.com>  
<http://BridesmaidTailor.com>

© DressTailor.net 2008. All rights reserved.